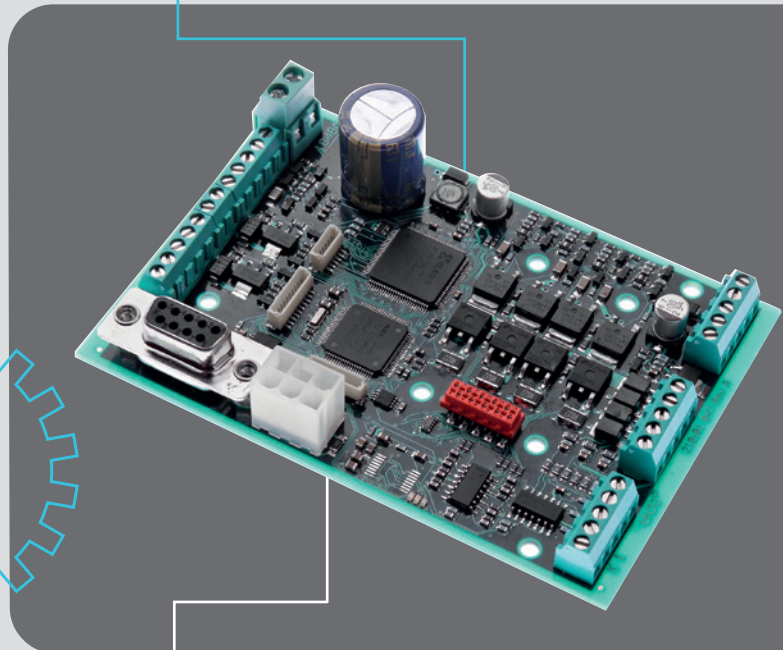


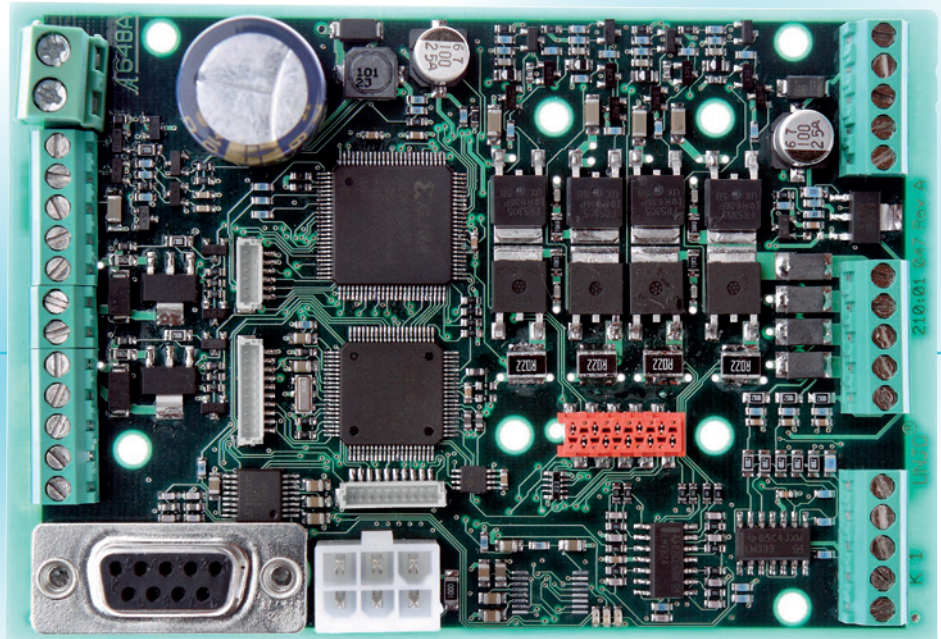
Enjoy the benefits of
Unjo Tiger.
Flexible motor control.



TIGER

- Delivered with customised software.
- Available in small quantities.
- Very short delivery time for customised unit and minimal initial investment.
- 2 DC-motors can be controlled, either synchronised or independent of each other, by the same unit.
- 450 W, drive and controller in one unit.

Unjo TIGER



Technical specifications

<p>General: Semi standard motor control unit for 2 or 3-phase step motor, brushless DC-motor or 1 or 2 brushed DC motors.</p> <p>Commutation: BLDC: - Block, with hall sensors or sensorless. - Sinusoidal.</p> <p>Step motor: Up to 128 micro steps.</p> <p>Supply: Nominal 18 – 48 VDC.</p> <p>Powerstage: Max 10 A continuously at 18 – 48 V.</p> <p>Inputs, 24 VDC: 4 digital inputs for 24 VDC systems. Switching level approx. 7 V. Configurable with 10 kΩ local pull-up to incoming supply voltage, or pull down to ground.</p> <p>Inputs, encoder/hall sensors: 2 connections for encoders with index pulse or digital hall elements for BLDC. Each connection delivers 5 or 10 VDC sensor supply and has 3 inputs with local pull-up to sensor supply.</p> <p>Inputs, analogue: 2 differential analogue inputs for ±10 VDC. AD conversion with 10 bits resolution.</p> <p>Outputs, 24 VDC: 2 digital outputs for 24 VDC system. The outputs can be configured with open collector and can sink approx. 30 mA with 22 kΩ local pull-up to incoming supply voltage or push/pull that can source or sink approx. 30 mA.</p> <p>Communication: RS-232 via 9-pole D-sub connector and RS-232 or RS-422 / RS-485 via separate connector.</p>	<p>Parameter memory Adjustable parameters are arranged according to (non volatile): customer demands.</p> <p>Dimensions: PCB: LxWxH = 107.5 x 73.5 x 26 mm. With mounting adapter for DIN rail LxW = 116 x 76 mm.</p> <p>Additional features/daughter boards: Analogue hall sensors. Analogue differential hall sensors. Digital outputs. Analogue outputs. Relay/opto-coupled outputs. CAN 2.0 B (up to 1 Mbit/s). USB.</p> <p>Software: A large number of basic modules are available, for example motor control and communication. These are utilised by an overall application software, which is unique for each customer project. The modular design of the basic functions allows the application program to be designed and verified in a very limited period of time. This means that the customer's investment can be kept very low, without increasing the unit cost.</p>
---	--

Unjo is a rapidly expanding and world-leading company that develops, designs and produces customized motor controllers and motor control systems that meet our customers' high demands for cost efficiency and performance.